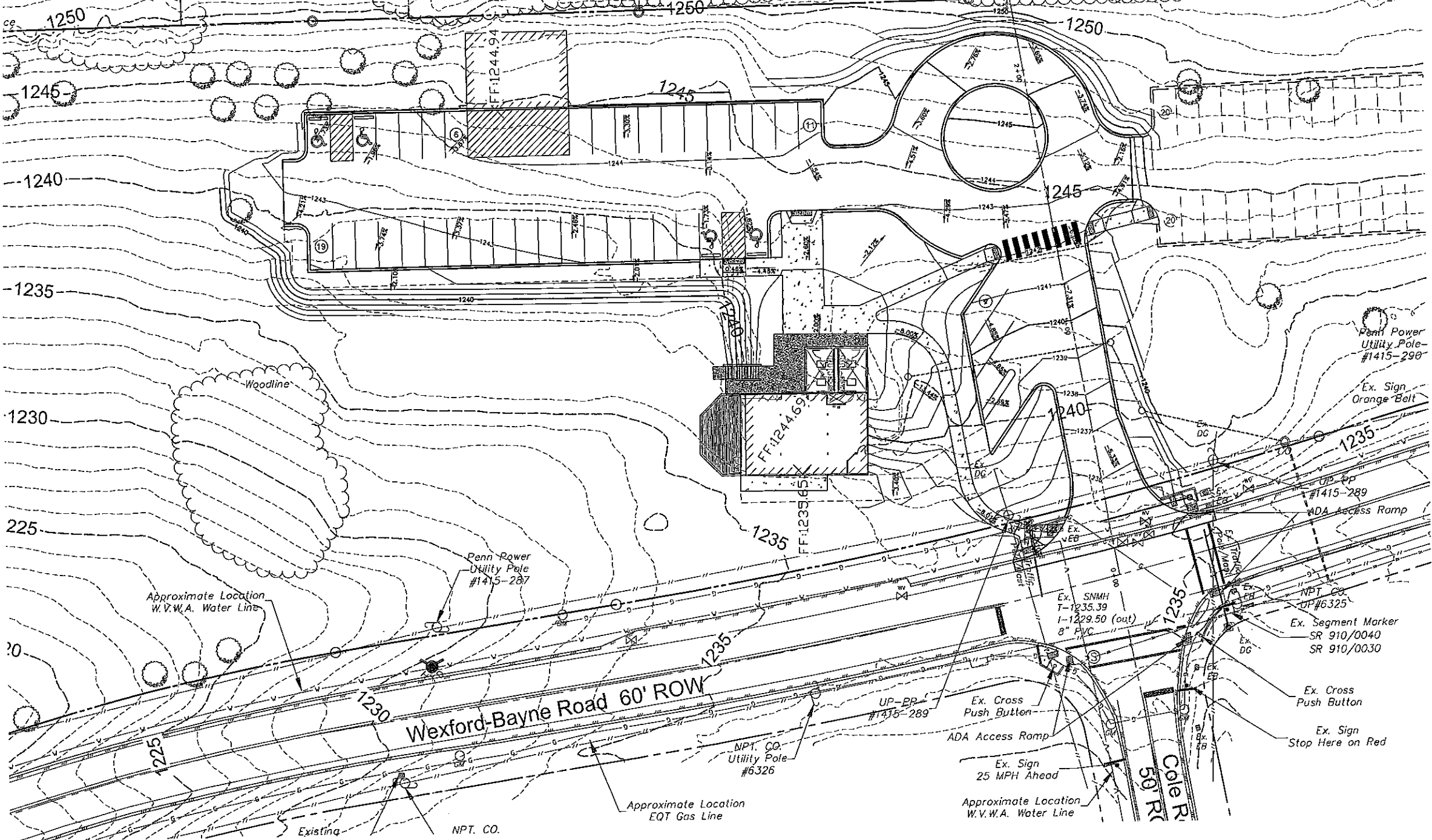


1498-G-45  
D.B.V. 13406 PG. 36  
ZONED SR

1498-G-47  
D.B.V. 9052 PG. 329  
ZONED SR

1498-G-48  
D.B.V. 10670 PG. 259  
ZONED SR

D.B.V. 13951 PG. 523  
ZONED SR



Penn Power  
Utility Pole  
#1415-290

Ex. Sign  
Orange Belt

UP-PP  
#1415-289

ADA Access Ramp

NPT. CO.  
UP #6325

Ex. Segment Marker  
SR 910/0040  
SR 910/0030

Ex. Cross  
Push Button

Ex. Sign  
Stop Here on Red

Ex. SNMH  
T-1235.39  
I-1229.50 (out)  
8" PVC

Ex. Cross  
Push Button

ADA Access Ramp

Ex. Sign  
25 MPH Ahead

Approximate Location  
W.V.W.A. Water Line

Wexford-Bayne Road 60' ROW

Cole R  
50' R

Approximate Location  
W.V.W.A. Water Line

Penn Power  
Utility Pole  
#1415-287

NPT. CO.  
Utility Pole  
#6326

Approximate Location  
EQT Gas Line

Existing NPT. CO.